

At Westmoreland School, we expect that our students have a commitment to good character and make good choices regarding the treatment of peers, staff and our school facility.

Each day, students listen to "Daily Words of Wisdom" as part of our morning announcements and are presented with the opportunity to make it a great day by making positive choices for oneself. We frequently emphasize and discuss the importance of living by "The Golden Rule"...Treating others the way you wish to be treated.

In addition, students are asked to abide by the following "**Commitment to Character**" and pledge themselves to being the best person they can be by practicing the "**Six Pillars of Character**" every day that include the following:



The Six Pillars of Character

Trustworthiness is being honest, telling the truth, and keeping promises.

1. Tell the truth, be honest, and return what you borrow.
2. Look for goodness in others. Do not talk behind anyone's back, spread rumors, or engage in harmful gossip.

Respect is judging people on their merits, being courteous and polite, and appreciating and accepting individual differences. It means treating others the way you would like to be treated.

1. Show respect for all persons regardless of gender, ethnicity, ability, or culture.
2. Think about what you say to others. Do not use profanity, obscene gestures, abusive language, and racially or derogatory remarks towards students, staff or other persons.
3. Behave courteously and cooperatively towards teachers, staff and other students.
4. Treat others like you want to be treated. Never threaten, harm, bully, intimidate abuse, mistreat, or fight with anyone.

Responsibility is fulfilling your school, family, and community obligations. Responsible people think ahead, set reasonable goals, control their tempers, and do not give up easily.

1. Be responsible for what you do. Never bring to school or threaten anyone with a weapon of any kind - toy or otherwise.
2. Keep your body healthy.
3. Attend school daily and be on time.
4. Be prepared daily by bringing all necessary material to class, including books and homework.

Fairness is playing by the rules, taking turns, sharing, and listening. A fair person is tolerant, open-minded and tries to understand what others are saying and feeling.

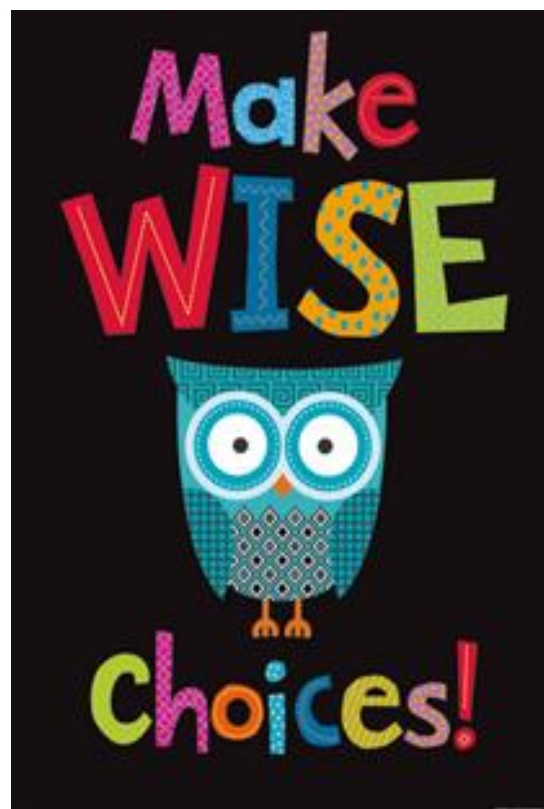
1. Talk out problems when they occur.
2. Show through your behavior that you believe that all people should be treated the same.

Caring is being kind, helpful and generous to everyone.

1. Report to school staff any information that someone has threatened to cause or caused harm to themselves or others.
2. Help others without being asked.

Citizenship is doing your share to help your family and make your school and community a better place. A good citizen plays by the rules.

1. Obey all school rules and laws.
2. Take care of all books, materials, equipment, and school property.
3. Wear clothing that adheres to the school dress code and is appropriate for school.
4. Help to keep our school grounds and facility clean by throwing away trash properly.



Westmoreland School's Code of Conduct

It is the purpose of Westmoreland School to operate in a manner that will provide an orderly process of education that ensures the welfare and safety of all students who attend the school. In accordance with that purpose, the Board of Education has adopted a policy that requires all schools to provide codes of conduct. These standards of behavior require students to conduct themselves at all times in a manner that facilitates an optimum learning environment for themselves and others.

We expect students to:

- Respect each other
- Respect school district employees
- Obey student behavior policies adopted by the Board of Education
- Obey rules established by individual teachers and faculty members.

Our school's primary goal is to educate, not to punish; however, when the behavior of an individual student comes in conflict with the rights of others, corrective actions may be necessary for the benefit of that individual and the school as a whole. Accordingly, students shall be governed by policies, regulations and rules set forth in this Code of Conduct.

The Code of Conduct is effective during the following times and in the following places:

- At school or on school property at any time
- Off school property at any school activity, function or event and while traveling to and from such events
- On vehicles provided for student transportation by the school system

Students Should:

Participate fully in the learning process. Students need to report to school on time, remain in class until excused or dismissed, pay attention to instruction, complete assignments to the best of their ability, and ask for help when needed.

Avoid behavior that impairs their own or other students' educational achievement, take care of books and other instructional materials, and cooperate with others.

Show respect for the knowledge and authority of teachers, administrators, and other school employees. Students must follow reasonable directions, use acceptable and courteous language, and avoid being rude, follow school rules and procedures.

Recognize and respect the rights of other students and adults. All students should show concern for and encouragement of educational achievements and participation of others in curricular and extra-curricular activities.

Disciplinary action for violations of expected behaviors will include appropriate collaborative review with a variety of professionals (ie. child study team members, school social worker or psychologist). In all cases, the rights of individuals will be ensured and protected. When applicable, individualized plans (i.e. IEP, 504) will be reviewed for appropriate consequences.

In addition, we consult parents as part of this process. Parents are encouraged to become familiar with the Code of Conduct and to be supportive of it in their daily communication with their children and others in the community. We ask your cooperation in sharing this responsibility for maintaining a proper learning environment.

We understand that there are times when it may be difficult for a student to follow the guidelines established. For consistency, students should be aware of the consequences of poor choices.

Below please find a partial list of disciplinary infractions and the range of corresponding administrative responses.

Student Behavior	Potential Consequences
Level 1 Lack of Cooperation Running in Hallway Consistently missed assignments Difficulty following classroom rules	<ul style="list-style-type: none"> · Reprimand · Discussion with teacher and/or principal · Recess detention
Level 2 Use of profanity Excessive tardiness	<ul style="list-style-type: none"> · Reprimand · Discussion with teacher and/or principal · Detention / loss of privileges · Parent call/conference
Level 3 Misbehavior - Bus/Field Trip Missing Detention Cheating Pushing/Shoving/Hitting Classroom Disruption Disrespect to School Staff	<ul style="list-style-type: none"> · Detention / loss of privileges · Parent call · In-school Suspension · Parent conference with principal and support staff
Level 4 Theft Fighting/Assault Truancy (leaving school without permission) Vandalism (defacing school property) Endangering the physical well- being of others Insubordination/Defiance of Authority	<ul style="list-style-type: none"> · Loss of Privileges · In-school suspension · Out-of-School Suspension · Restitution may be required · Possible police referral